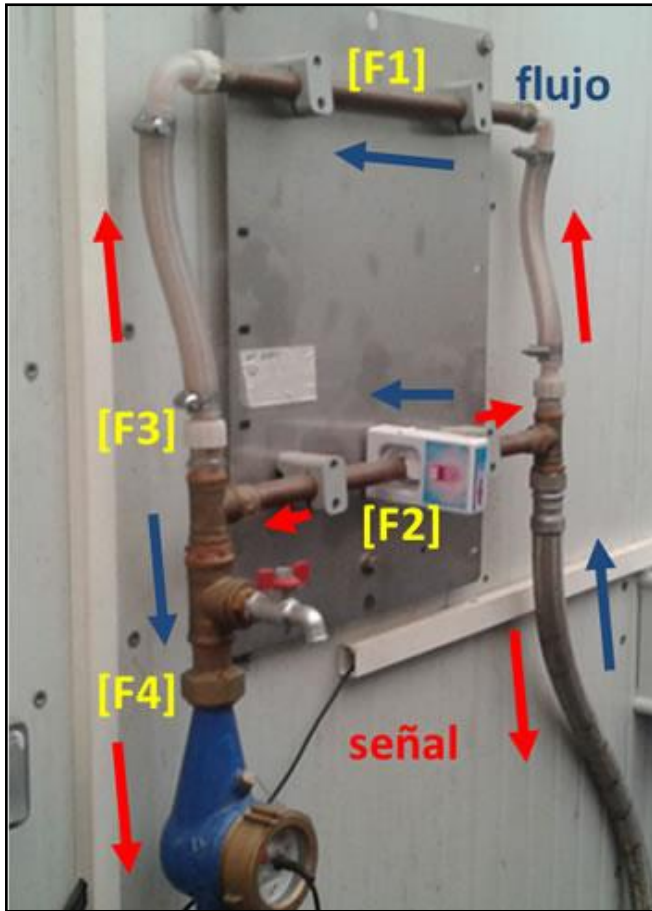


# Controlled Test with Hard Water (45°)



HydroFlow signals flow in all directions to prevent the formation of limescale throughout.

***“I did not expect all the pipes to free of limescale. We now plan to further tests in a working environment, with a view to including HydroFlow in our product packs.”***

Maria Angeles Olivares, Research & Development

A major manufacturer of **car wash machines** in Spain put a HydroFlow HS38 through a controlled test between April and December 2012.

Over nine months, some 500 m<sup>3</sup> of main water was passed through the pipes. The water hardness was 45° (French scale).

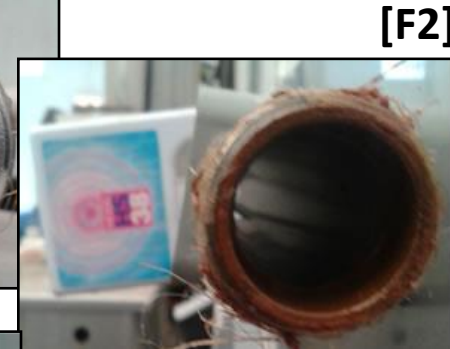
The idea was to compare the limescale in the upper pipe with the lower. In that time, you would expect 1 or 2 mm of limescale to accumulate.

The copper pipe was secured to the metal plate by non conductive plastic supports, avoiding any possibility of an electric loop.

After almost nine months, we found the pipes and flow metre to be completely free from scale.



[F1] **The moment of truth**



**Limescale? Nothing**



[F3]



[F4]